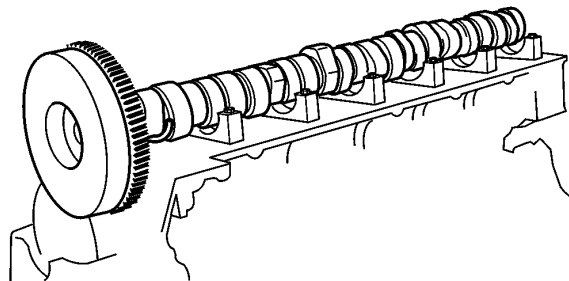


This TSI Service Bulletin replaces TSI Service Bulletin 215-002, "Camshaft Wear, D12, D12A, D12B, D12C" (11.2001), publication no. PV776-TSP160575.

Date	Group	No.	Supp.	Page
3.2004	<b>215</b>	<b>002</b>		1(2)

## Camshaft Wear, Check D12, D12A, D12B, D12C

### Camshaft Wear



W2004342

Fig. 1: Camshaft

This information covers procedures for checking camshaft wear in VOLVO D12, D12A, D12B, and D12C engines.

### Contents

- ["Camshaft, Wear Check" page 2](#)

## General

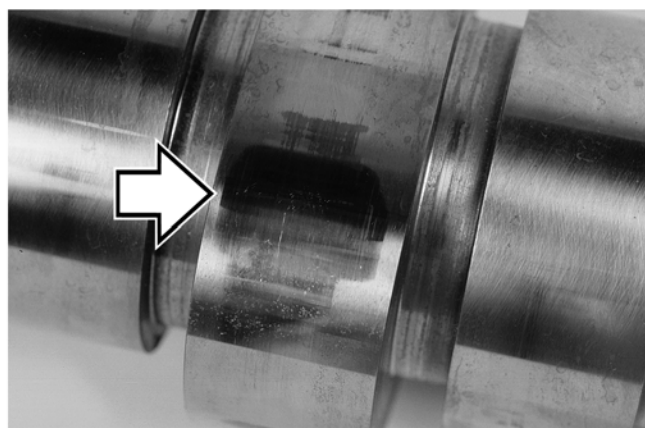
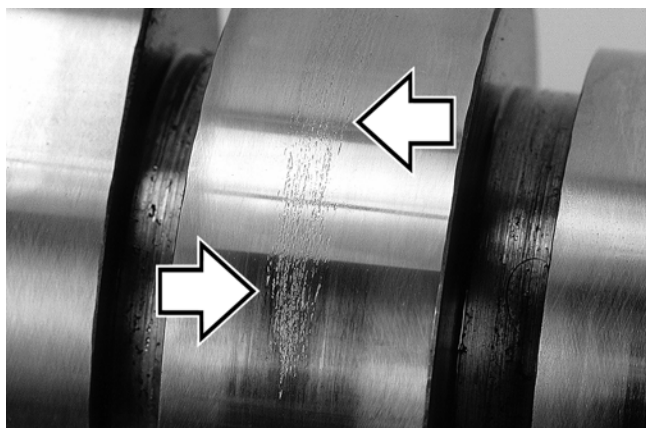
### Camshaft, Wear Check

Surface irregularities may appear on VOLVO engine camshaft lobes in normal operation. This does not mean that the camshaft must be replaced. These marks do not adversely affect the engine's performance nor the durability of the engine or any of its components.

Fig. 2: Camshafts with acceptable wear, page 2 provides examples of camshaft lobes exhibiting this condition. These camshafts may be reused.

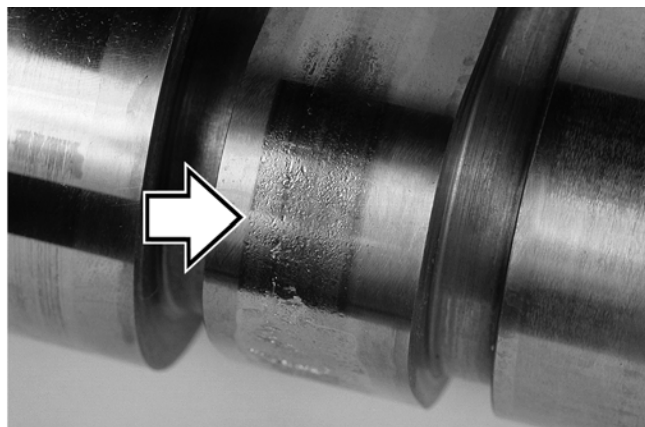
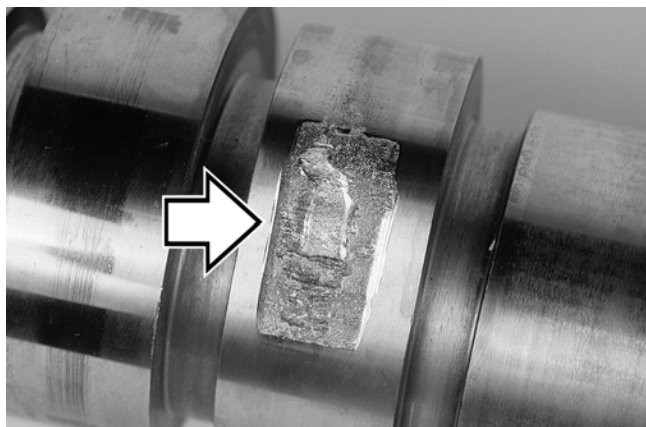
Fig. 3: Camshafts with unacceptable wear, page 2 provides examples of lobes exhibiting unacceptable wear and deterioration. These camshafts and the rocker arms corresponding to the worn lobes must be replaced.

**Note:** If there is any measurable wear, such as shown in Fig. 3: Camshafts with unacceptable wear, page 2, the camshaft should be replaced.



W2002219

Fig. 2: Camshafts with acceptable wear



W2002221

Fig. 3: Camshafts with unacceptable wear